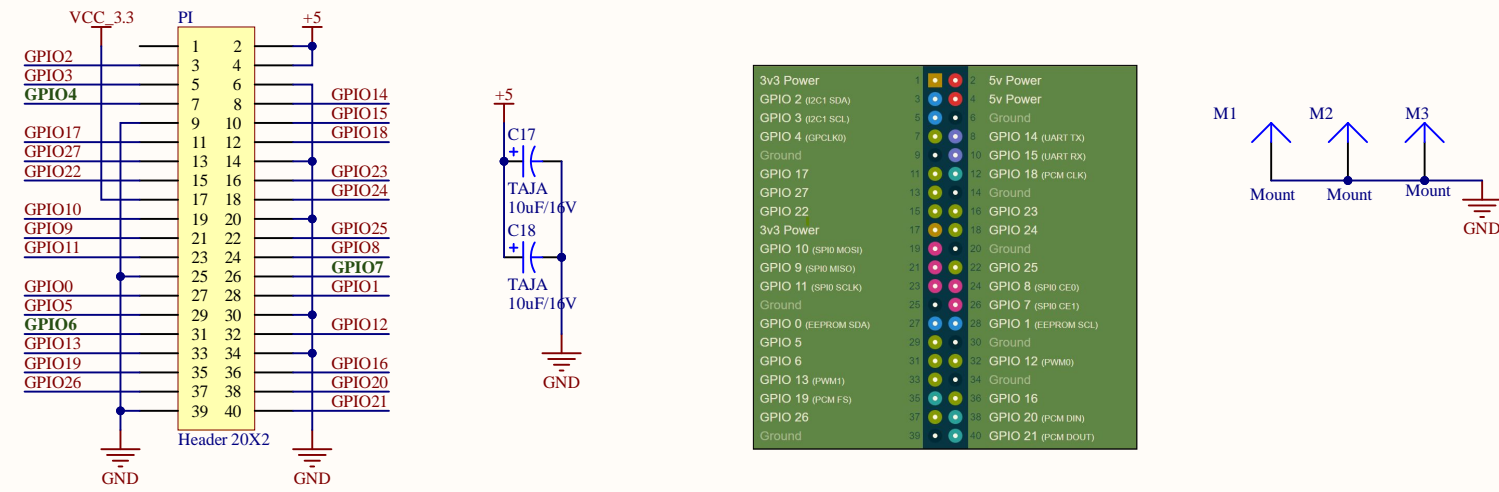
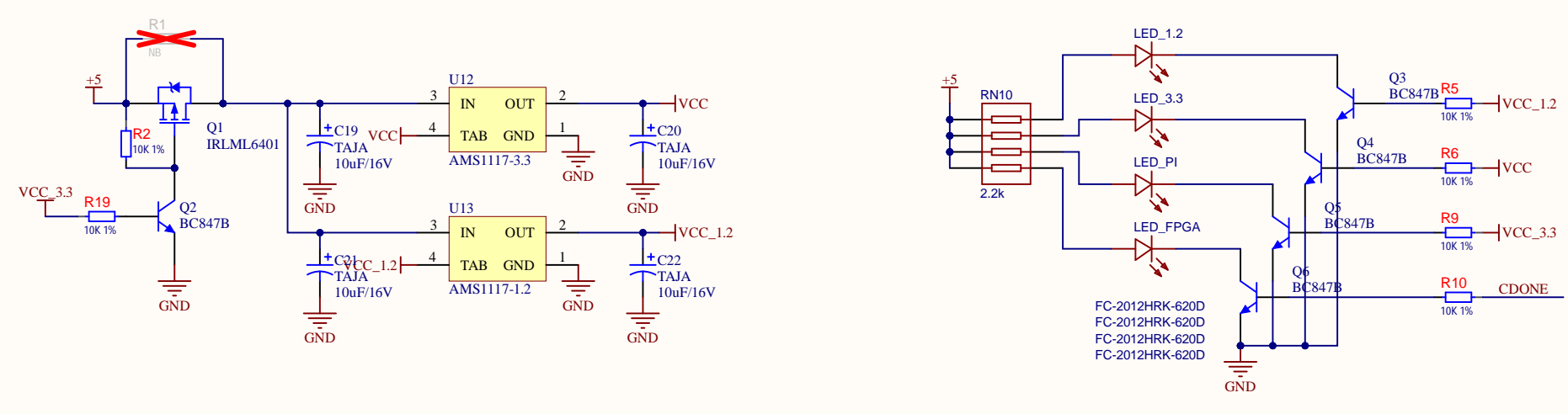


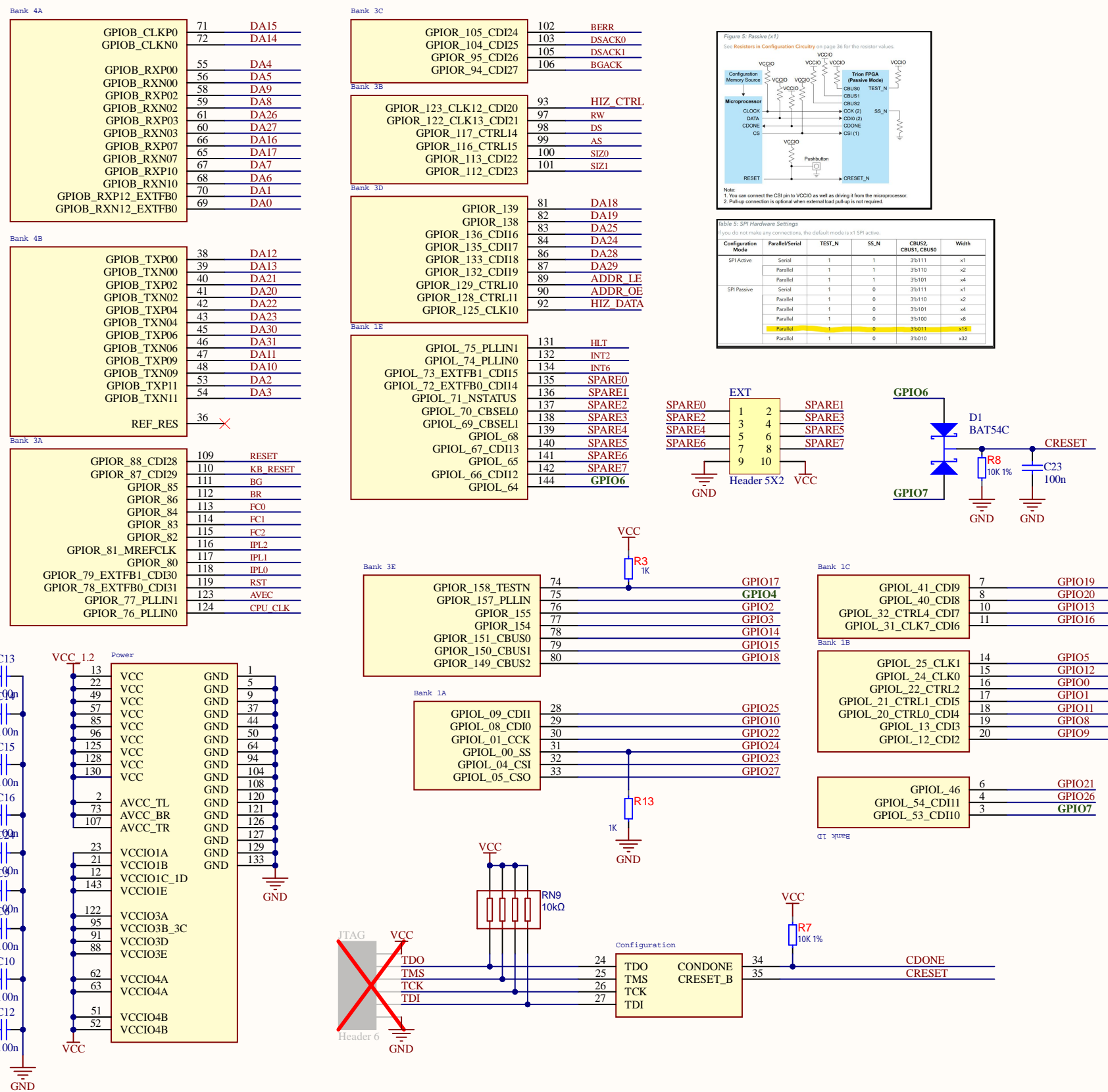
## Raspberry 40 Pin Interface



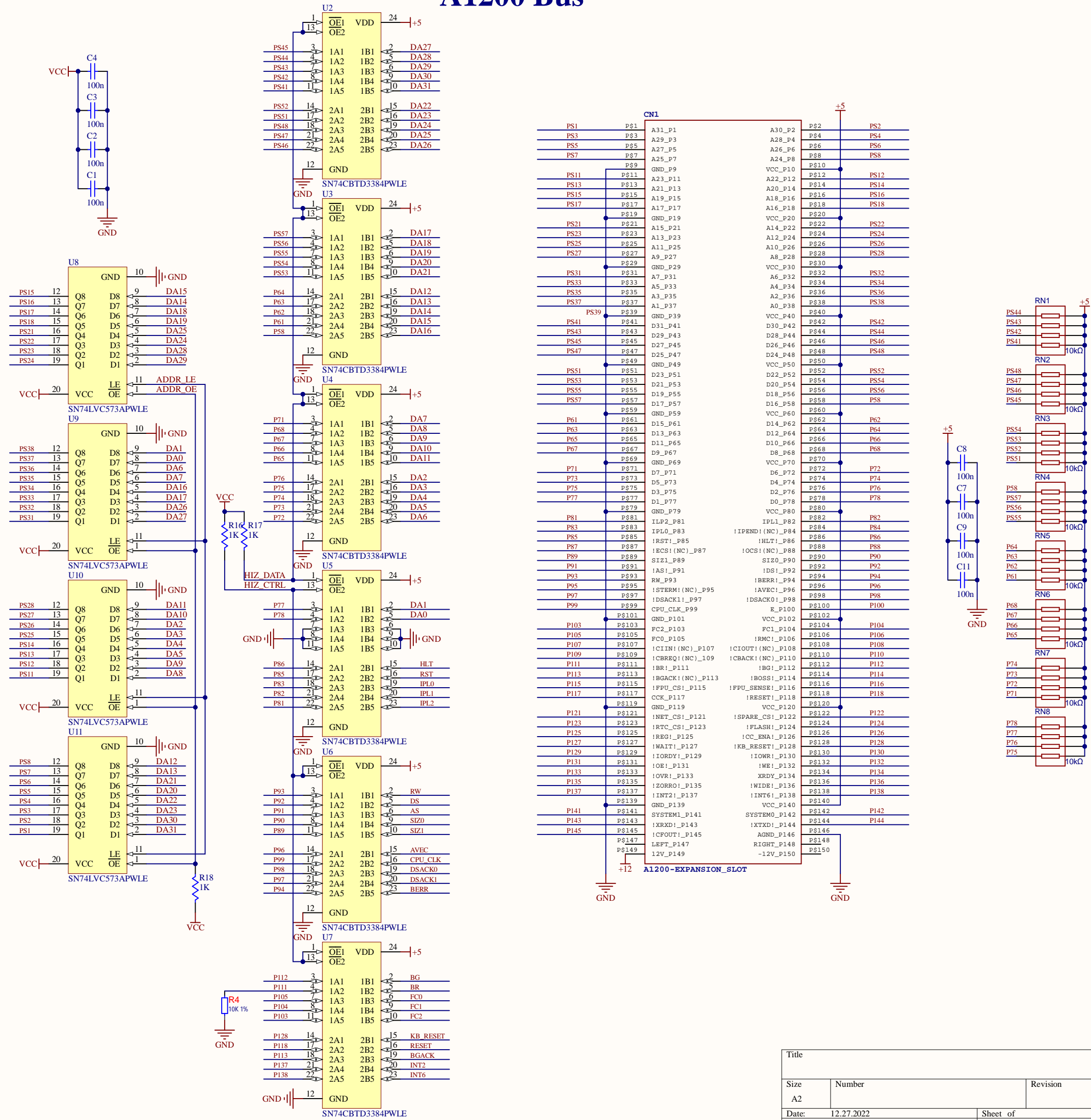
## Power and Indicators



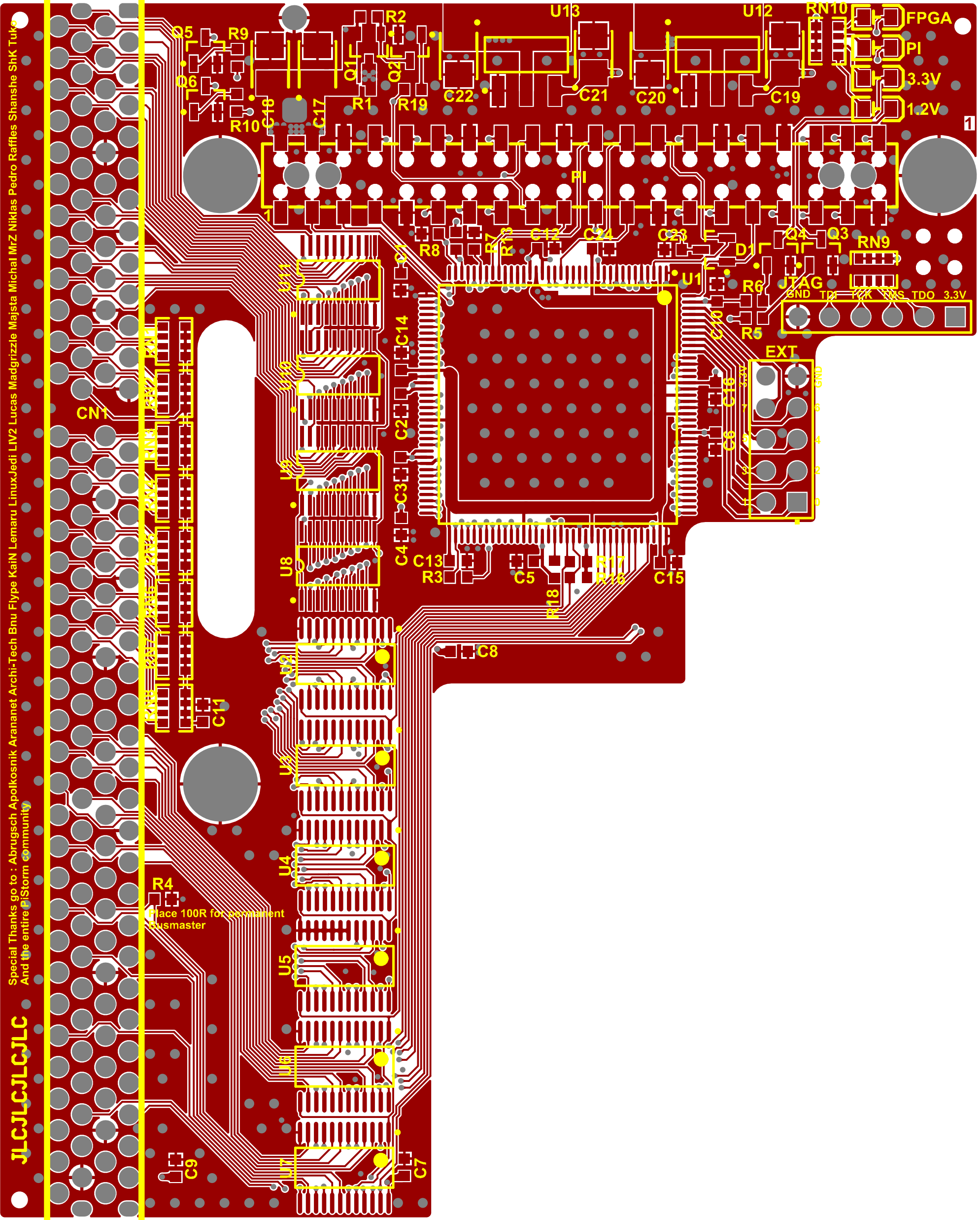
# FPGA



## A1200 Bus



Title		
Size A2	Number	Revision
Date: 12.27.2022	Sheet of	
File: C:\Users\A\PS32_lite_rev_a_public.SchD	Drawn By:	



# JLCJLCJLCJLC

Special Thanks go to : Abruksch Apolkosnik Arananet Archi-Tech Bnu Flype KaiN Lemaru LinuxJedi LIV2 Lucas Madgrizzle Majsta Michal MrZ Niklas Pedro Raffles Shanshe ShK Tuko  
And the entire PiStorm community

R4  
Place 100R for permanent  
Busmaster

JTAG  
GND TDI TCK TMS TDO 3.3V

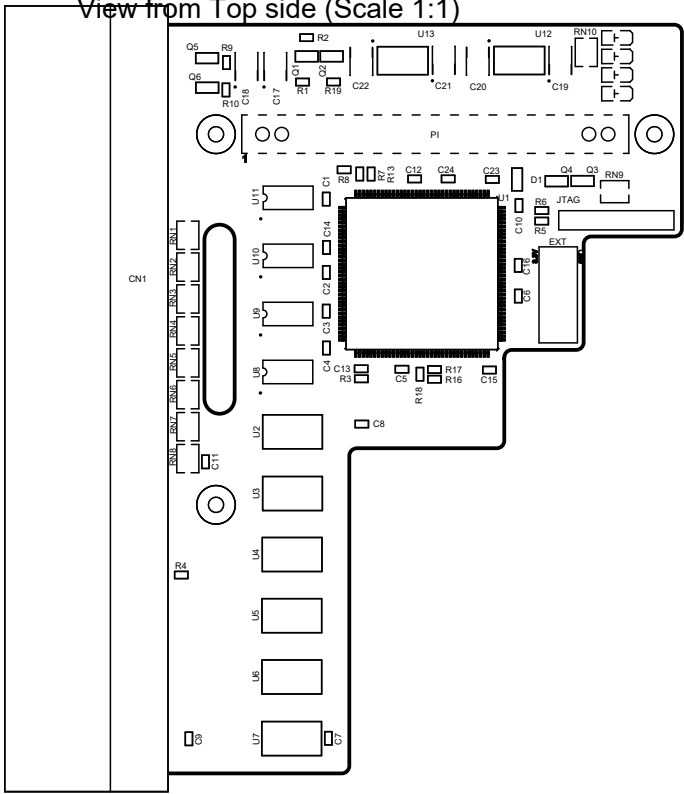
EXT  
GND 6 4 2 0

3.3V  
1.2V

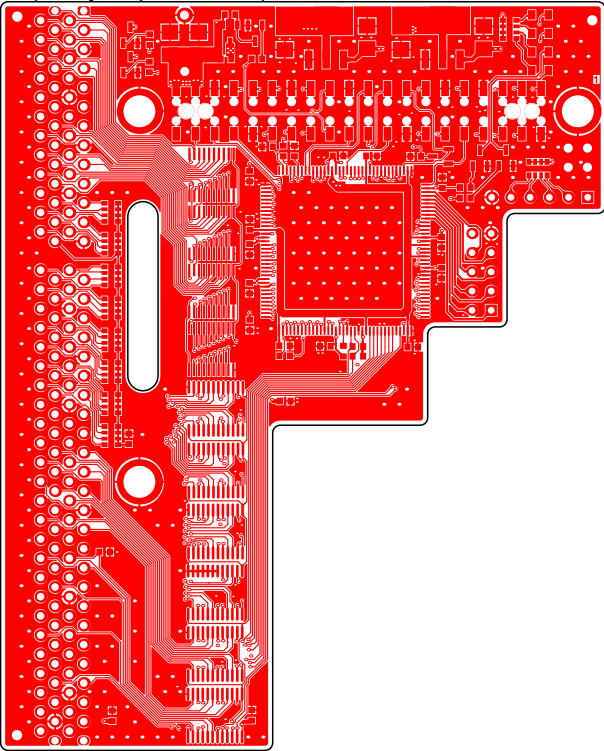
FPGA  
PI



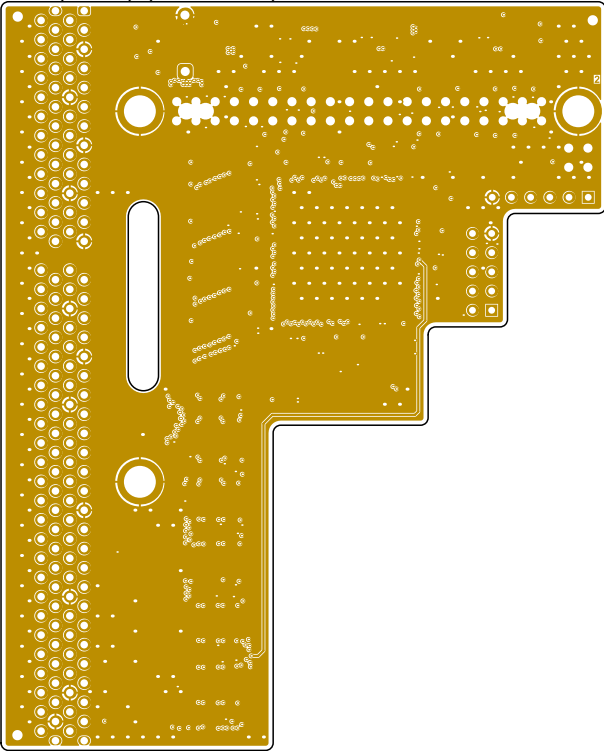
View from Top side (Scale 1:1)



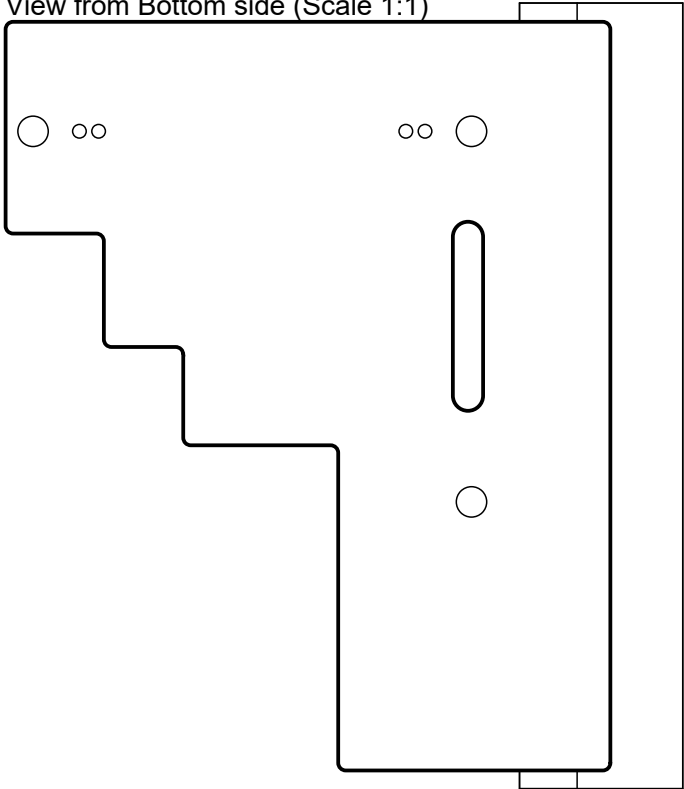
Top Layer (Scale 1:1)



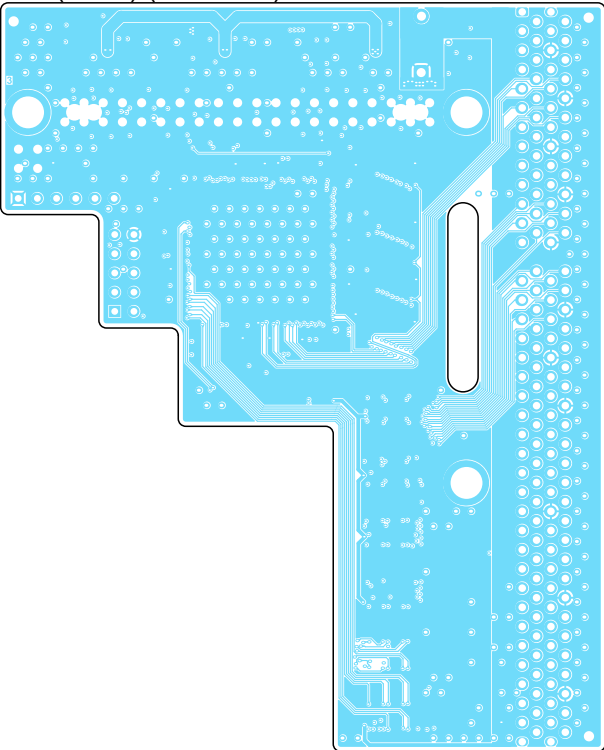
Int1 (GND) (Scale 1:1)



View from Bottom side (Scale 1:1)



Int2 (PWR) (Scale 1:1)



Bottom Layer (Scale 1:1)

